



**BOTTEQ**  
AUTOMATION AT SCALE

Company Profile



Enterprise Automation Redefined

# Our Profile

## Table Of Content

- 03 Our Welcome
- 04 CEO & Founder
- 05 Professional Services
- 06 CORE Values
- 07 Our Strategic Automation

- 09 Our Solutions
- 11 Our Strategic Client
- 12 Our Strategic Partnership
- 20 Our Award



# | Welcome

We are thrilled to introduce BOTTEQ Automation, the cutting-edge and specialized business dedicated to empowering enterprises in their Intelligent Automation journey. Our primary objective is to assist organizations in transforming their operations through the implementation of advanced technologies, with a strategic focus on SS&C BluePrism and other related cognitive automation tools.

At BOTTEQ Automation, we understand that the automation landscape is rapidly evolving, and businesses across various industries are seeking innovative solutions to optimize their processes, enhance efficiency, and achieve sustainable growth. With our expertise and commitment, we aim to deliver a unique value proposition to every enterprise, enabling them to leverage the power of automation for transformative results.



# Our CEO & Founder



Dear Valued Partners, Clients

As the Founder and CEO of Botteq Automation, I am honored to address a community that stands at the forefront of the digital transformation era. Our journey, inspired by a vision to revolutionize business operations through intelligent automation, is not just about integrating technology but about crafting the future of work, innovation, and growth.

In the past two decades, I have witnessed the incredible pace at which technology has evolved and reshaped every aspect of our lives and businesses. From my early days at leading technology firms to my pivotal role in regional automation leadership with Blue Prism, and through the establishment of Botteq Automation, the journey has been both challenging and exhilarating. Each step has reaffirmed my belief in the transformative power of digital technology when aligned with clear, strategic vision and execution.

Botteq Automation was established on the principle that intelligent automation can facilitate new efficiencies, drive innovation, and enable businesses to achieve their full potential. Our mission is firmly grounded in the belief that technology should serve as a conduit to the future, enabling companies to not only optimize their current processes but also to innovate and lead their industries.

Odeh Mahmoud

# Our Professional Services

## Plan



- SME Awareness Sessions
- Process Assessment & Capture
- Automation lifecycle & Pipeline management
- Automation Sizing and program Management
- Digital transformation value Consulting services

## Implement



- Outsourcing
- Technical Solution Installation
- Business Analysis
- Solution design
- Design Authority Services
- Development Services
- Process Health Check and Audit Services

## Manage



- Technical and Functional Production Support Services
- End to End Managed Services
- Functional process design enhancement services
- Benefit Realization
- ROM & Technical Infra Assessment

# | Our CORE Values

## Sustainability

We lead with sustainable automation solutions. Our commitment goes beyond reducing our environmental impact; we innovate in creating automation that helps clients minimize their footprint. By integrating eco-conscious practices into our automation, we drive a sustainable future.

## Diversity

Our commitment extends to fostering inclusivity and equity in our workplace. We celebrate diversity among our clients, employees, and communities, reflected in our practices and workforce. Our automation solutions embrace diversity, ensuring inclusivity and accessibility for all.

## Ethics

At our company, integrity drives our business ethos. We uphold transparency, honesty, and fairness in all dealings. We hold our employees, partners, and suppliers to these high ethical standards. Additionally, our products prioritize safety, security, and privacy, ensuring a positive impact on society.

# Our Strategic Automation

## Why Customers in 90+ Countries Choose Intelligent Automation

### Intuitive and Insightful Automation

Introducing a paradigm shift in automation, our Intuitive and Insightful Intelligent Automation solutions redefine efficiency and precision in business operations. Designed to seamlessly integrate with your workflow, these cutting-edge Intelligent Automation systems not only automate mundane tasks but also possess the intelligence to adapt, learn, and make insightful decisions.

### Flexible and Scalable

Our Flexible and Expandable Intelligent Automation is not bound by limitations; it evolves alongside your business, effortlessly adjusting to varying demands and complexities. Its modular architecture and scalability empower your operations, allowing for easy expansion across departments, processes, and systems.

### Security and Compliance

The Intelligent Automation platform offers centralized controls and bank-grade security, compliance, and governance necessities for world enterprises. With our platform, you can configure, plan, schedule, pause, and resume your processes. Manage exceptions seamlessly and monitor your production KPIs with ease, ensuring optimal efficiency and reliability in your operations.

# Our Strategic Automation

## Why Customers in 90+ Countries Choose Intelligent Automation

### Support and Guidance

Get support every step of the way. The automation everywhere Intelligent Automation platform is inseparable from the people devoted to your RPA achievement. A+ is a complete RPA guide environment for every step your RPA adventure.

### Consistency

Consistency Intelligent Automation is your steadfast partner in maintaining accuracy and uniformity in every operation. It tirelessly executes routine tasks with unwavering precision, minimizing errors and ensuring each step is performed reliably and consistently.

### Enterprise Level AI & Analytics

Combined, Intelligent Automation + AI + analytics create the most effective complete RPA platform designed to deliver an enterprise-level digital workforce.



# Our Solutions



## Robotic Process Automation (RPA)

Our RPA solutions automate repetitive tasks, optimize workflows, and elevate operational efficiency, enabling organizations to focus on strategic initiatives.



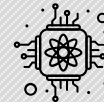
## CRM Solutions

Elevate customer engagement and retention with our CRM solutions, optimizing sales, marketing, and service processes for enhanced customer experiences.



## Processes Mining

Leveraging data mining techniques, we unearth valuable insights within your processes, paving the way for informed decision-making and process optimization.



## Cognitive Solutions

Harnessing AI and machine learning, our cognitive solutions simulate human thought processes, driving intelligent decision-making and problem-solving.



## Natural Language Processing (NLP)

Our NLP expertise facilitates understanding and analyzing human language, empowering systems to interpret and generate text-based data efficiently.



## RPA Management Solutions

Our comprehensive suite of tools and services ensures the seamless implementation and management of RPA systems for sustainable performance.

# Our Solutions



## Sustainability Solution (ESG)

Our sustainability solution leverages intelligent automation to unlock efficiencies and drive innovation.



## VoiceBOTS

deliver seamless and intuitive conversational experiences. It is designed to enhance customer engagement, streamline operations.



## Automation Management Platform

With our solutions, you can configure, plan, schedule, pause, and resume your processes. Seamlessly manage exceptions and easily monitor your process KPIs.



## Optical Character Recognition (OCR)

Our advanced OCR technology extracts and processes data from various documents with exceptional accuracy and speed, enabling seamless automation and enhanced productivity.



## ChatBOTS

Our advanced chatbot solution leverages artificial intelligence and natural language processing to provide intelligent, responsive, and always-available customer support.



## Consulting Services

Our expert consultants bring a wealth of industry knowledge and strategic insights to help you identify opportunities, mitigate risks, and drive sustainable growth.

# Our Strategic Clients



ADIB



مصرف أبوظبي  
الإسلامية

بنك الرياض  
riyad bank



الاستثماري  
INVESTBANK



مواصلات الإمارات  
Emirates Transport



هيئة الطرق والمواصلات  
ROADS & TRANSPORT AUTHORITY



# | Our Strategic Partnerships



# | Our Strategic Partnerships



Intelligent automation combines the power of artificial intelligence (AI) and machine learning (ML) to deliver digital workers that take away the mundane tasks human workers are overloaded with empowering them to focus on the profit driving initiatives only people can do.



## Create

### Create Journeys

- Process Assessment Tool
- Process Intelligence
- Capture
- Automation Lifecycle Management
- Accelerators

Assess, improve and develop the highest value workflows, processes and journeys, at speed, to deliver the best outcomes and reduce time to automation by up to 75%.



## Accelerate

### Accelerate Work

- Decipher IDP
- Document Automation
- Desktop
- Decision
- Email AI

Re-engineer work by automating tasks, enabling complex decision making and intelligently processing documents.



## Transform

### Transform Experiences

- UX Builder
- Interact
- Service Assist
- Digital Exchange

Transform customer, employee and user experiences by connecting journeys, empowering the workforce, and innovating on demand.



## Unify

### Unify Operations

- Chorus
- Director

Deliver transformational results by monitoring, orchestrating and optimizing work across every aspect of the business, from individual tasks and processes to complete end-to-end journeys.

# Our Strategic Partnerships



Our partnership with SugarCRM allows us to provide our customers with an easy-to-use, comprehensive customer relationship management system. With SugarCRM, our customers can manage their customer relationships, increase sales and customer loyalty, and improve customer service. Additionally, SugarCRM provides features such as marketing automation, analytics and reporting, and customer self-service portals, allowing our customers to more effectively manage their business and customer relationships.

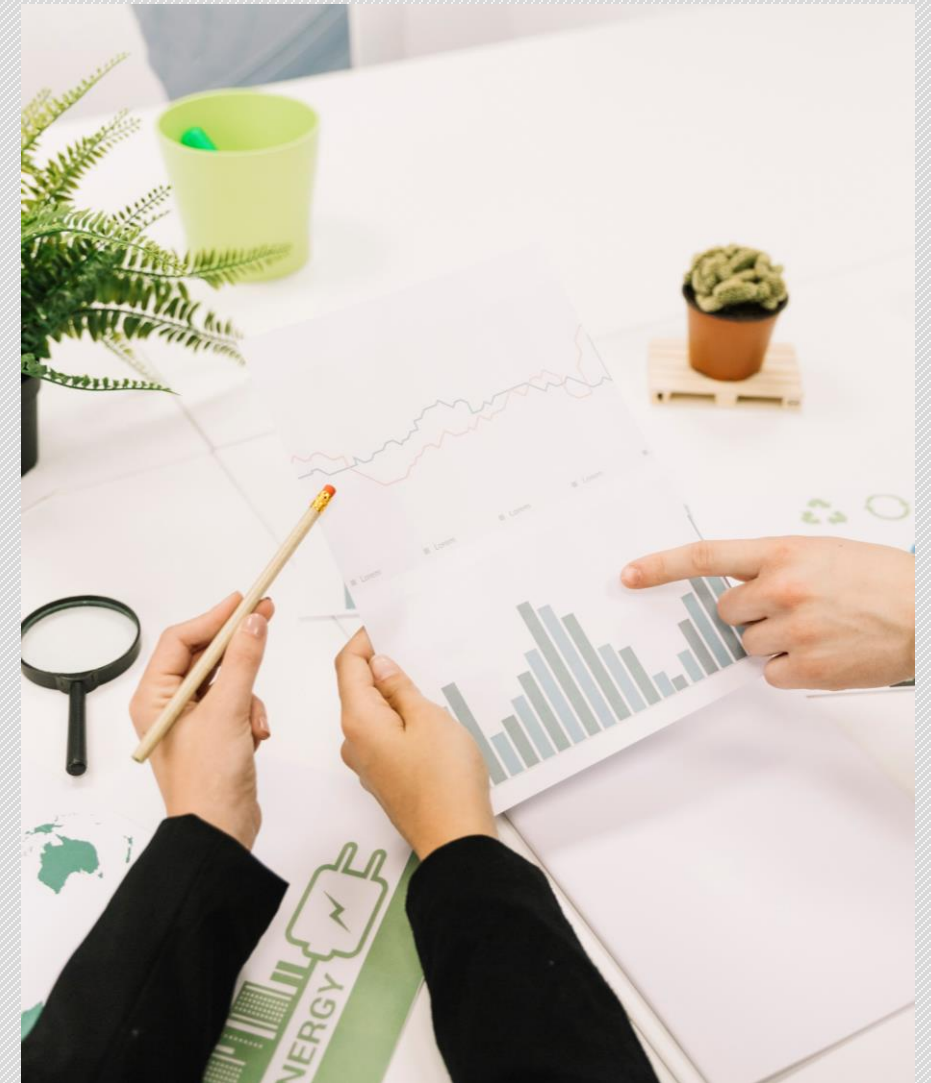


# Our Strategic Partnerships



GLYNT.AI is a machine learning platform that liberates unstructured data from complex documents. With GLYNT.AI, users can get first results in 20 minutes, averaging 98% accuracy. It can be quickly trained for loosely structured documents through industries and domains, such as invoices, medical reports, forms, paystubs, and more. Its multi-tenant solution and quick evaporation policies maintain the value, privacy, and security of data and documents.

GLYNT.AI carbon footprint solution leverages artificial intelligence and advanced data analysis techniques to help organizations measure, analyze, and mitigate their carbon emissions. By collecting and analyzing relevant data points, such as energy consumption, transportation, waste management, and supply chain activities, our solution provides valuable insights into the carbon footprint of an organization.



# Our Strategic Partnerships



QPR innovates, develops, and delivers software for analyzing, monitoring, and modeling organizations' operations. We also offer a wide range of complementary consulting services.

Through QPR software and services, organizations are empowered to drive process and business transparency, ensure that their operations are run as required and designed, and create actionable intelligence where modern AI meets thought leadership.





# Our Strategic Partnerships

## GLOBAL CHANGER

### The Climate Control Center

Identify emission sources, then plan, execute and deliver emissions reduction and reporting from one streamlined platform.

### Model

Use a constantly expanding library of over 270 mitigation projects to identify the most efficient and effective strategy, evaluated against ROI.

### Manage

Collaborate across disparate teams to execute your sustainability strategy and track your progress towards Net-Zero.

### Report

Generate audit-ready, traceable sustainability data.

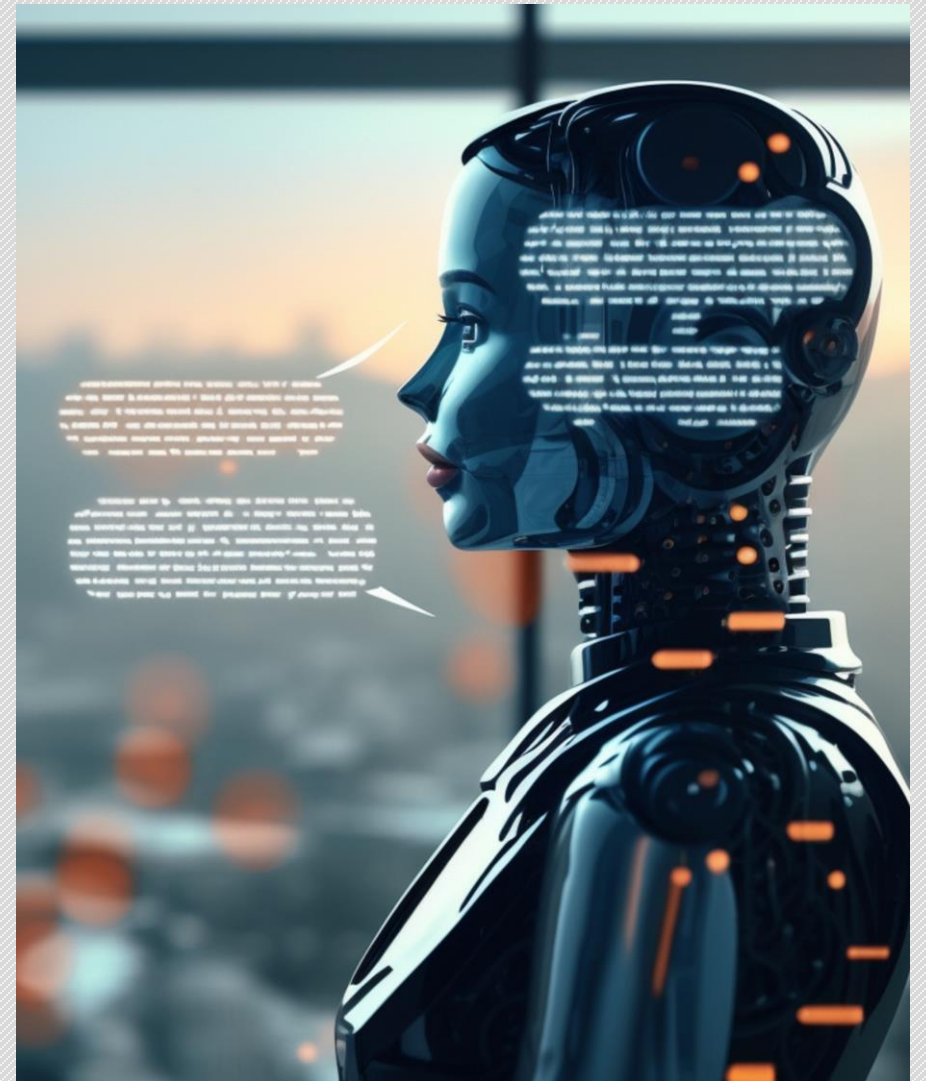


# Our Strategic Partnerships



Effectively, safely, and responsibly leverage conversational and generative AI

The Kore.ai platform delivers simplicity, flexibility, and control when applying conversational and generative AI and LLMs. Deploying our platform cuts the time and effort to deploy effective AI solutions at your business. Our platform is open. We build upon your existing architecture and integrate with any LLM and technology infrastructure partners that are best for you.



# | Our Strategic Partnerships



Our partnership with APPIAN innovative to RPA and AI solutions designed to streamline and automate business processes. comprehensive platform encompasses all the necessary tools to design, automate, and optimize even the most complex workflows from start to finish. Trusted by the world's most forward-thinking organizations, helps improve operational efficiency, unify data, and enhance customer experiences—driving better growth and superior outcomes..



# Our Awards

## Client Business Impact FSI Award Global

Our Second Badge Highlights Our Global Impact And Expertise In Delivering Transformative RPA Solutions For The Financial And Industry Worldwide. This Accolade Showcases Our Team's Ability To Deliver Top-Tier Solutions And Drive Outstanding Results For Our Clients On A Global Scale.

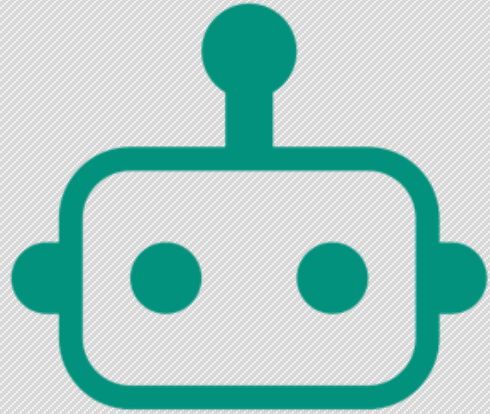
## Client Business Impact FSI Award EMEA

This Badge Acknowledges Our Exceptional Capabilities And Achievements In Creating Significant Business Impact For Our Clients In The Financial And Industry (FSI) Across Europe, The Middle East, And Africa (EMEA). We Have Continuously Strived To Push The Boundaries Of What RPA Can Achieve, And This Award is a Reflection of Our Hard Work And Dedication.



SS&C   blueprism	
CERTIFIED PARTNER	
Delivery Provider	<b>GOLD</b>
Capability Provider	<b>SILVER</b>

Winner Excellence Awards 2023 - 2024



# BOTTEQ

AUTOMATION AT SCALE

[info@botteqautomation.com](mailto:info@botteqautomation.com)

[www.botteqautomation.com](http://www.botteqautomation.com)

United Arab Emirates  
Dubai  
+971 507 163 086

Jordan  
Amman  
+962 79 020 0229

Thanks

Saudi Arabia  
Riyadh  
+966 566-126-662

Kuwait  
Kuwait  
+965 66-525-848

+971 507 163 086

+962 79 020 0229

+966 566-126-662

+965 66-525-848