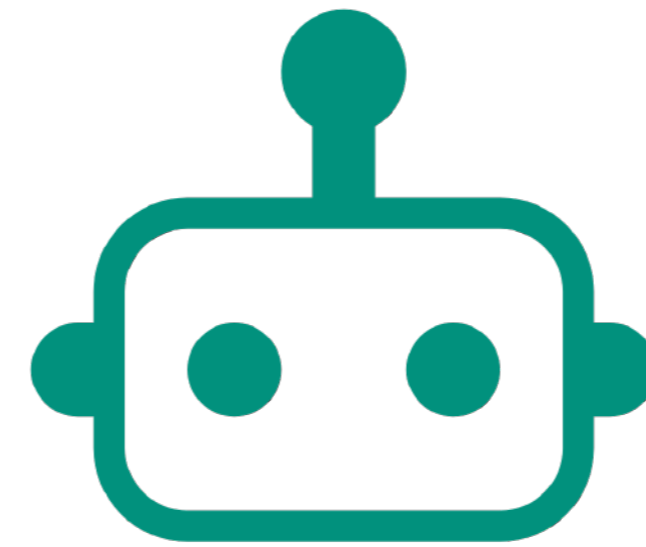


# Corporate Profile



**BOTTEQ**  
AUTOMATION AT SCALE



# Welcome to the world Of Intelligent Automation

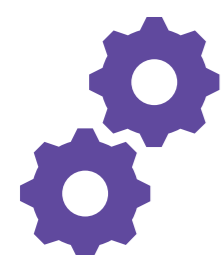
BOTTEQ Automation is your gateway to the forefront of cutting-edge business solutions. We take pride in being a specialized entity committed to empowering enterprises on their Intelligent Automation journey. At BOTTEQ Automation, we are more than just a service provider; we are architects of innovation, dedicated to reshaping the future of business operations through the integration of advanced technologies, with a strategic emphasis on SS&C Blue Prism and other leading cognitive automation tools.

Today, the demand for transformative solutions is greater than ever. BOTTEQ Automation recognizes the urgency and significance of this need. Our mission is to guide organizations through the dynamic evolution of the automation landscape, offering tailored, strategic solutions that not only optimize processes but elevate efficiency and foster sustainable growth.

We understand that businesses, spanning diverse industries, are on a quest for innovative approaches to stay ahead. With a deep-rooted expertise and unwavering commitment, we stand poised to deliver a unique value proposition to every enterprise. Our goal is to empower organizations to harness the full potential of automation, achieving results that go beyond the ordinary.



# Our key offerings and strategic dimension to Intelligent automation



## Intelligent Automation Solutions:

We provide comprehensive automation solutions leveraging industry-leading technologies such as SS&C Blueprism and other related platforms. Our team of experts works closely with clients to assess their specific requirements, design tailor-made solutions, and seamlessly integrate automation into their existing systems and workflows. By harnessing the full potential of Intelligent Automation, organizations can achieve higher productivity, reduced costs, improved accuracy, and enhanced customer experiences.



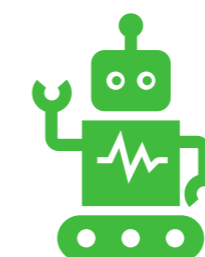
## Strategic Partnership Approach:

At BOTTEQ Automation, we believe in building long-term partnerships with our clients. We take a collaborative approach, aligning our automation strategies with your business goals and objectives. By understanding your unique challenges and opportunities, we can develop a roadmap for automation implementation that not only addresses your immediate needs but also supports your long-term growth ambitions.



## Unparalleled Expertise:

Our team consists of highly skilled professionals who possess extensive experience in Intelligent Automation. We stay up-to-date with the latest advancements in automation technologies and methodologies, ensuring that our clients receive the most effective and innovative solutions. Through continuous learning and improvement, we aim to provide exceptional service and deliver maximum value to our clients.



## Seamless Integration:

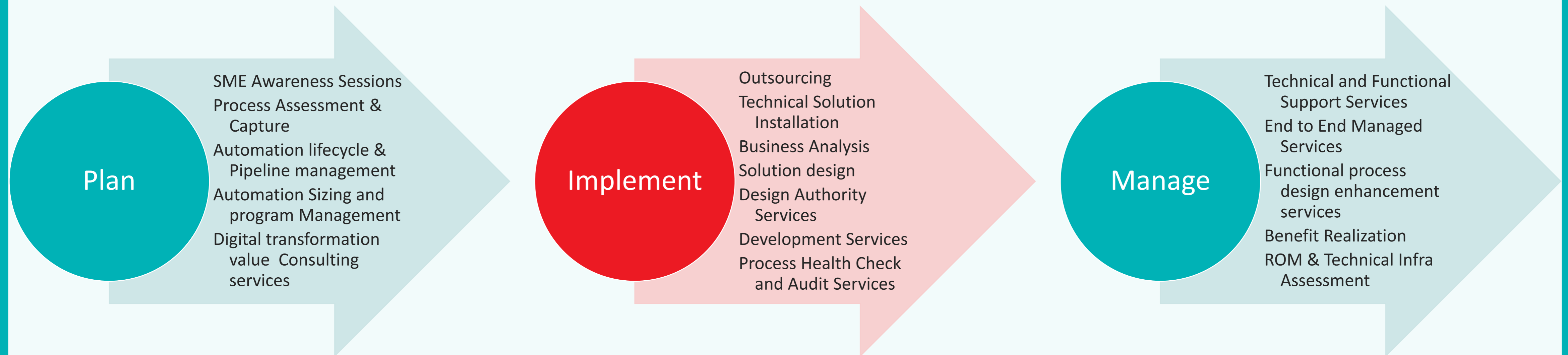
We understand the importance of a seamless integration process when implementing automation solutions. Our experts work closely with your internal teams, ensuring a smooth transition and minimal disruption to your operations. By optimizing existing processes and leveraging automation, we enable you to achieve operational excellence while driving growth and innovation.



## Client-Centric Approach:

At the core of our operations is a strong commitment to our clients' success. We prioritize understanding your unique business requirements, challenges, and goals. This enables us to provide personalized solutions and unparalleled support, ensuring that your automation journey is a resounding success.

# BOTTEQ Professional Services



# Our Strategic clients



الأول  
SAB

ooredoo



البنك التجاري الأردني  
Jordan Commercial Bank



بنك الرياض  
riyad bank



مواصلات الإمارات  
Emirates Transport



هيئة الطرق والمواصلات  
ROADS & TRANSPORT AUTHORITY



# Strategic Partnership

ss&c | blueprism®

 **sugarcrm**

 GLOBALCHANGER

 **cinda**

**QPR** 

 **GLYNT.AI**

 **BOTTEQ**  
AUTOMATION AT SCALE

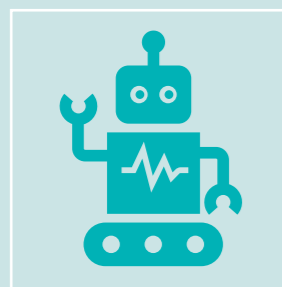
# ss&c | blueprism® Strategic partnership



**Discover** Discover what you can automate with a fully AI-powered solution that analyzes your key business processes so you can put automation into action that drives key results.

**Empower** Empower every user with tools from no code to pro code and deliver truly engaging and interactive experiences for employees and customers.

**Scale** Scale up your enterprise and add more advanced automations using an entire suite of products and pre-built solutions available through the leading partner ecosystem and RPA marketplace.



Intelligent automation combines the power of artificial intelligence (AI) and machine learning (ML) to deliver digital workers that take away the mundane tasks human workers are overloaded with empowering them to focus on the profit driving initiatives only people can do.

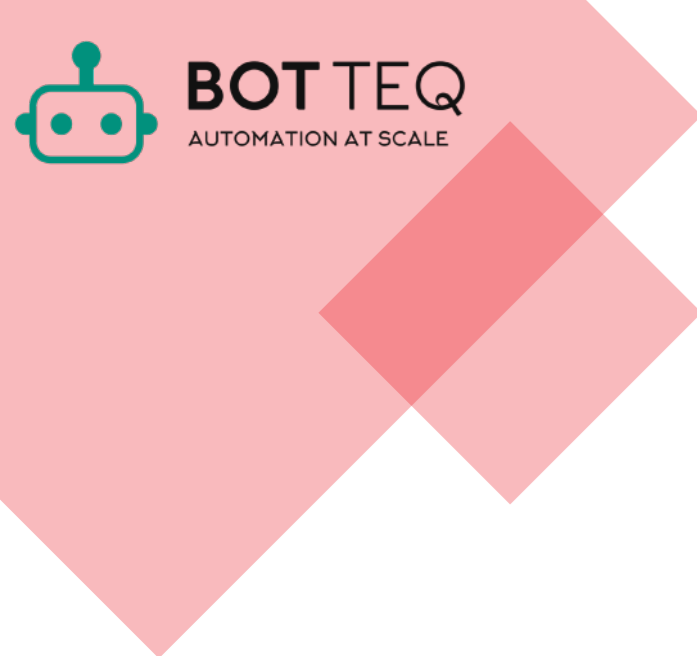


SS&C Blueprism intelligent automation platform provides everything you need to serve your customers in today's demanding world with a secure, stable and compliant environment that propels digital transformation. We're here to help every step of the way from automation specialists, pre-built automations and training and certification to our unrivaled customer support.

**Analyze** Fully autonomous digital workers learn business processes like humans to analyze structured and unstructured data.

**Govern & Manage** Govern and manage your automations at enterprise scale, without compromising your security and compliance policies.

**Connect** Roadblocks caused by disparate systems are a thing of the past. Combine your technology systems, your multiple data sources and your business.



# SS&C | blueprism® Products Portfolio

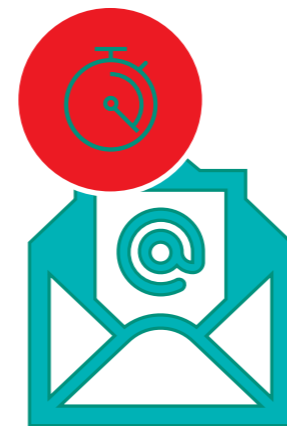


## Create

### Create Journeys

- Process Assessment Tool
- Process Intelligence
- Capture
- Automation Lifecycle Management
- Accelerators

Assess, improve and develop the highest value workflows, processes and journeys, at speed, to deliver the best outcomes and reduce time to automation by up to 75%.



## Accelerate

### Accelerate Work

- Decipher IDP
- Document Automation
- Desktop
- Decision
- Email AI

Re-engineer work by automating tasks, enabling complex decision making and intelligently processing documents.

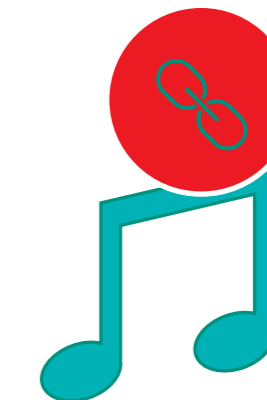


## Transform

### Transform Experiences

- UX Builder
- Interact
- Service Assist
- Digital Exchange

Transform customer, employee and user experiences by connecting journeys, empowering the workforce, and innovating on demand.



## Unify

### Unify Operations

- Chorus
- Director

Deliver transformational results by monitoring, orchestrating and optimizing work across every aspect of the business, from individual tasks and processes to complete end-to-end journeys.

Our partnership with SugarCRM allows us to provide our customers with an easy-to-use, comprehensive customer relationship management system. With SugarCRM, our customers can manage their customer relationships, increase sales and customer loyalty, and improve customer service. Additionally, SugarCRM provides features such as marketing automation, analytics and reporting, and customer self-service portals, allowing our customers to more effectively manage their business and customer relationships.



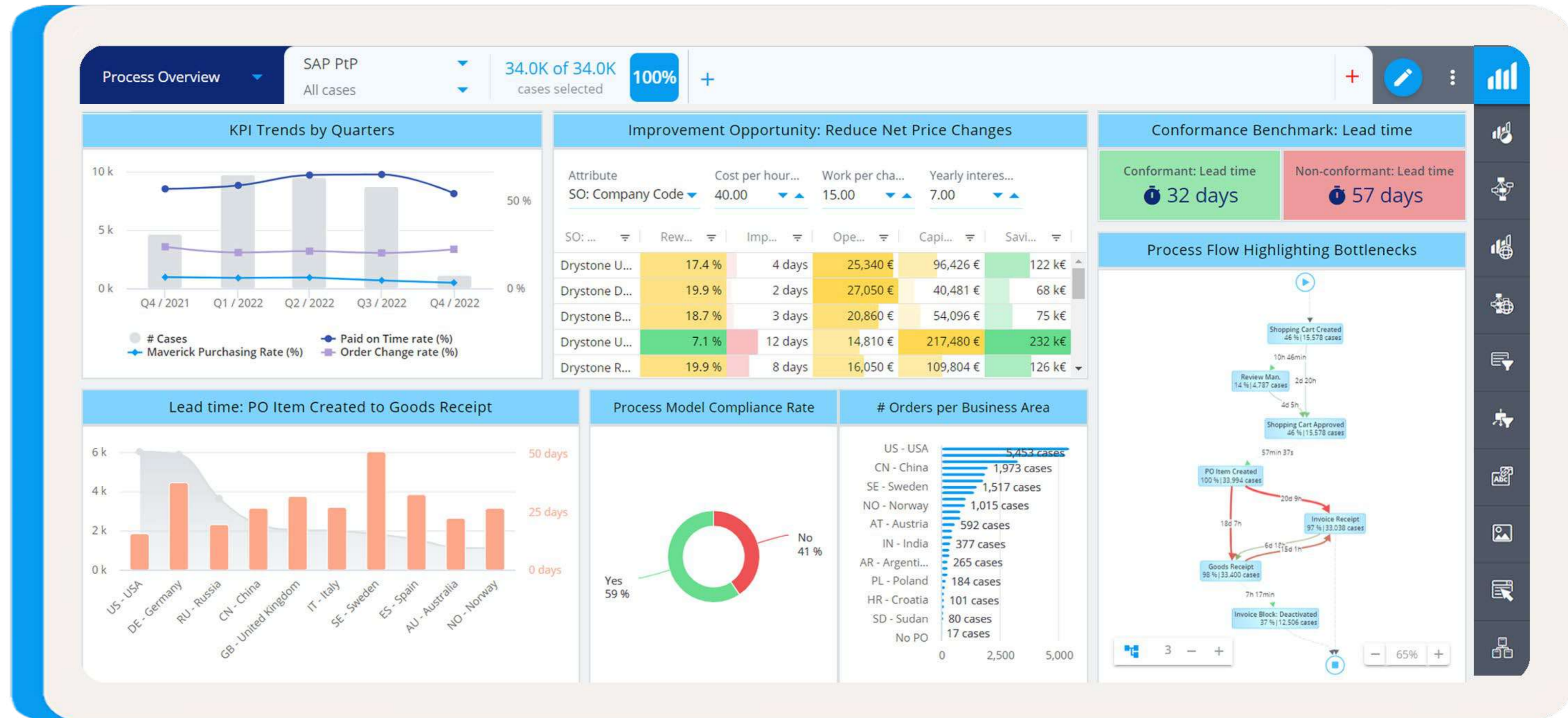


Xina AI is the first Arabic Dialectal Interactive Voice Assistant, designed to cater to your company and your clients' needs. With multiple dialects and easy integration into your systems, Xina promises a growth in revenue and an increase in client satisfaction.

QPR innovates, develops, and delivers software for analyzing, monitoring, and modeling organizations' operations. We also offer a wide range of complementary consulting services.

Through QPR software and services, organizations are empowered to **drive process and business transparency, ensure that their operations are run as required and designed, and create actionable intelligence where modern AI meets thought leadership.**

# QPR





Glynt AI is a machine learning platform that liberates unstructured data from complex documents. With Glynt AI, users can get first results in 20 minutes, averaging 98% accuracy.



It can be quickly trained for loosely structured documents through industries and domains, such as invoices, medical reports, forms, paystubs, and more. Its multi-tenant solution and quick evaporation policies maintain the value, privacy, and security of data and documents.



Glynt AI carbon footprint solution leverages artificial intelligence and advanced data analysis techniques to help organizations measure, analyze, and mitigate their carbon emissions. By collecting and analyzing relevant data points, such as energy consumption, transportation, waste management, and supply chain activities, our solution provides valuable insights into the carbon footprint of an organization.





## **The Climate Control Center**

Identify emission sources, then plan, execute and deliver emissions reduction and reporting from one streamlined platform.

### **Model**

Use a constantly expanding library of over 270 mitigation projects to identify the most efficient and effective strategy, evaluated against ROI.

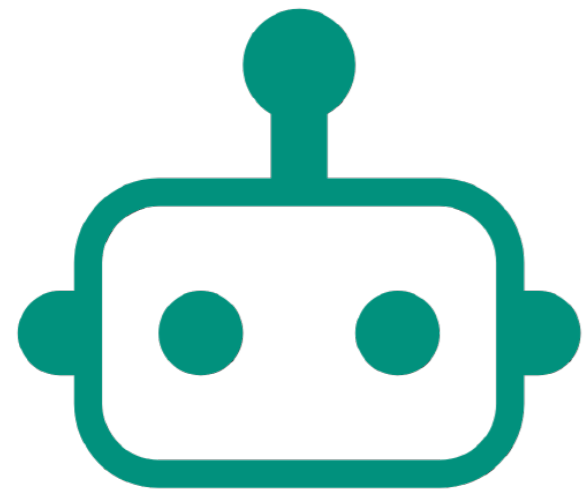
### **Manage**

Collaborate across disparate teams to execute your sustainability strategy and track your progress towards Net-Zero.

### **Report**

Generate audit-ready, traceable sustainability data.

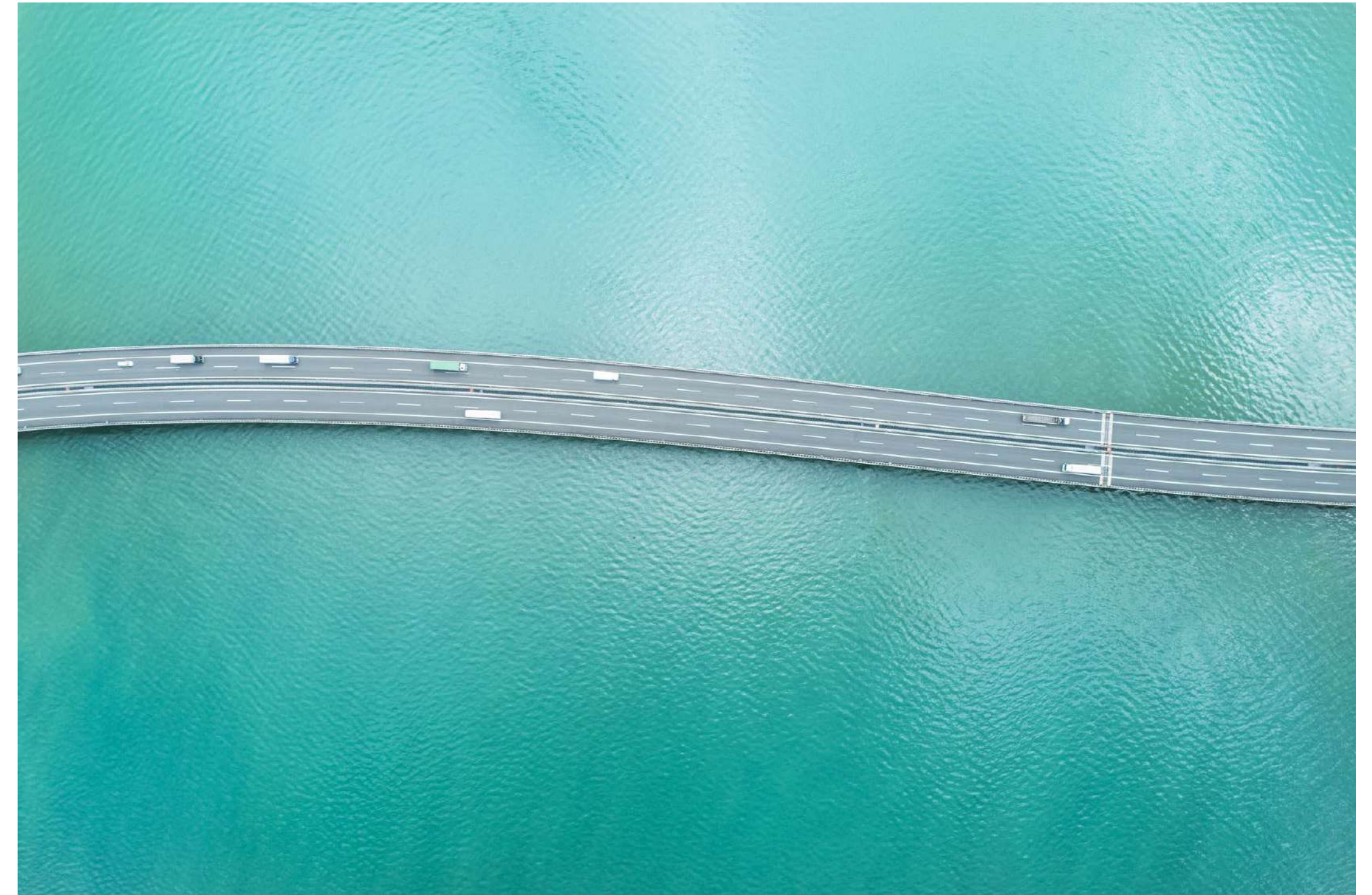




# BOTTEQ

AUTOMATION AT SCALE

Thank you



**Amman, Jordan:**

Amman Gates, Tower a,  
Floor 5

Phone: +96799690009

**KUWAIT:**

Office 20, Floor 9, Altujjar Tower,  
Almurqab , Abdulaziz Hamad  
AlSaqr Street, Kuwait City  
Phone: +96599664720

**DUBAI, UAE**

Phone: + 971(0)44541159

Mobile: + 971(0)566553797

Parkside Retail Level, Cluster R,  
Jumeirah Lake Towers, Dubai, UAE

**Riyadh, KSA**

Mobile: + 966 (0) 553797373

8006 King Fahd Road, Riyadh,12363  
P O Box - 22622,  
Kingdom of Saudi Arabia



Odeh.mahmoud@botteqautomation.com



[www.botteqautomation.com](http://www.botteqautomation.com)